



- **Hamilton County Emergency Medical Services responds to over 52,000 emergency calls a year through the 9-1-1 system.**
- **17 ambulances are on duty 24 hours a day, 7 days a week, servicing over 576 square miles of Hamilton County.**
- **Our response times average ten minutes or less across Hamilton County.**
- **All ambulances are advanced life support vehicles, staffed by licensed Emergency Medical Technicians (EMT), Advance Emergency Medical Technicians (AEMT) and Paramedics. We provide on-site extended hospital emergency care, cardiac monitoring, critical care medications and other advanced therapies.**

COME JOIN OUR TEAM!

- Over 160 team members are on board serving our customers daily.
- 24/72 hour shifts.
- We offer competitive salary and benefit packages.
- We employ full-time and part-time

9-1-1

is for emergencies only and should be used only in the event of a true emergency.

When you dial 9-1-1, speak clearly and calmly. Make sure you give an accurate name, address and clarify your type of emergency. Follow all instructions given by the Emergency Medical Dispatch Personnel.

Hamilton County E.M.S.

3916 Volunteer Drive

Chattanooga, TN 37416

(423) 209-6900

Fax: (423) 209-6901

www.hamiltonnems.org

HAMILTON COUNTY



EMERGENCY MEDICAL SERVICE

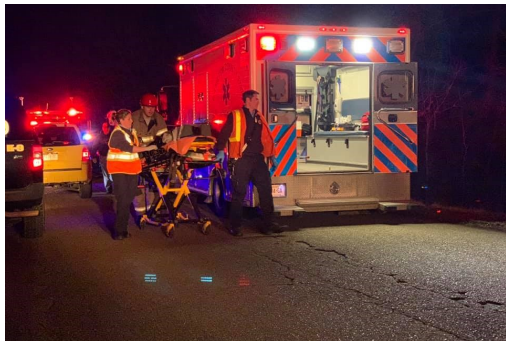
*“Setting the
Standard of Care”*

SAFETY AND HEALTH IS OUR BUSINESS

- We have been positively impacting people's lives since 1988. Today, more than ever, we stand ready to answer your call for help.



- Our professionals strive to meet the ever-changing nature of healthcare, emergency services, and public safety through continuous training, incorporation of new technologies, and interagency cooperation.



From our family to yours, we are here for you in your moment of crisis. Our service is based on a foundation of principles. They include professional leadership, training, mutual respect customer service, and teamwork. With these core values,

WE ARE THERE WHEN YOU NEED US!

- Hamilton County Emergency Medical Services is committed to making a difference in the health and welfare of others.
- Our extraordinary team members devote their lives to unselfish service within our community.
- We make an immediate impact by helping people who are experiencing the most crucial moments of their lives.
- Our professional skills and training saves lives and makes a positive contribution to the community.

